

7th Annual Sweets, Treats and Trees

Thursday, November 13, 2014 ~~~~~ 6:00 p.m. – 9:00 p.m.

**Early Shopping Hours for
Financial Donors and Volunteers
4:30 p.m. — 5:30 p.m.**

Please bring the enclosed ticket with you

It's the moment our customers have been anxiously waiting for: The 7th Annual Sweets, Treats and Trees holiday shopping event!

Our customers' excitement about Sweets, Treats and Trees starts building weeks before the event. When we post the signs advertising Sweets, Treats and Trees, our customers begin making plans to attend. When the day finally arrives, the line to enter our store extends from the porch of our building into the parking lot. Some shoppers have particular favorites, so they immediately head for the area that is of most interest to them. You may even find shoppers sharing carts to hold all of their finds!

Collectors of all types of holiday décor peruse displays of snowmen, Santas, angels, nativity scenes and nutcrackers, searching for items they want to add to their collections. We receive thousands (yes, thousands) of individual ornaments that are hung on trees, special store fixtures and garland strung throughout the store. We also feature nostalgic vintage ornaments in ReFinds, our antiques and collectibles store. Holiday clothing is available in great quantities in the Boutique. You'll find books with a Christmas theme for sale in our book department, and shelves of Christmas linens and stockings stacked in abundance next to our everyday linen section. Christmas



tableware, oodles of mugs and cookie tins can be found on our housewares shelves.

Do you need a new faux Christmas tree at a bargain price? We have so many this year, we are expanding the tree department to our warehouse in The Annex across Railroad Street. Our tree helpers can assist you with finding just the right Christmas tree for your home or business. Christmas yard art will also be available in the same warehouse.



Homemade cookies and beverages, live music and door prizes create a festive atmosphere during the event. Last year, approximately 600 people enjoyed the merriment, and we anticipate as many, or more, folks this year. The photos above from last year's Sweets, Treats and Trees tell the story of what a wonderful, fun event this is. We hope you will join us.



MESSAGE FROM THE BOARD PRESIDENT

Dear Neighbors,

For the past 29 years, The Caring Place has flourished because of the efforts of caring supporters, volunteers, staff and wise and visionary past and present board members. Their support allows The Caring Place to continue providing vital services to thousands of people in financial crisis in our community. The Board of Directors recognizes, and wants to continue to grow, this noble effort.

Sustained by donations to the store, and the consistent financial support we receive from individuals, the faith-based community, and local foundations and funders, we believe it is our fiscal and moral duty to lead this organization responsibly and efficiently, making every dollar count for the good of this community. We felt that it was time to map out the next five years in a clear and concise fashion, using vision and compassion for what might lay ahead for Georgetown and Northern Williamson County. In January, 2014, the Board of Directors of The Caring Place, along with Advisory Council representatives, undertook the work of creating a strategic five-year plan, and named it the 2020 Plan. We felt that you, our supporters, deserved this diligent effort.

The Caring Place 2020 Plan includes goals to constantly work to improve the organization, recruit and support our volunteers, ensure our financial sustainability, improve our capacity, and add new programs and services to meet the needs of people in crisis in our growing community. We look forward to sharing these goals in more detail with you when we launch this effort at the start of 2015.

It is important to note that the foundational work for creating the 2020 Plan was achieved by an astute and dedicated community task force in 2013. The task force identified what our community saw as social needs that The Caring Place might fill. Thank you to all who contributed to that effort; it has served us well.

We are excited to launch this 2020 Plan in 2015, and we hope that you will join us in our work. We are in a perfect position to accomplish these goals with an outstanding staff led by our capable and enthusiastic Executive Director, Ginna O'Connor, a dedicated Advisory Council, and a committed community.

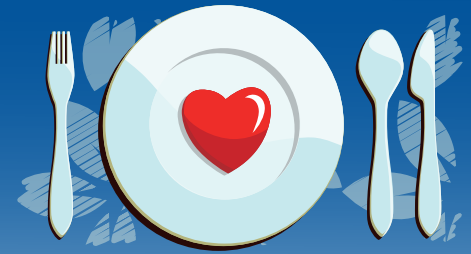
Finally, I would like to thank The Caring Place Board of Directors for their unwavering effort in building the 2020 Plan. I count it a blessing and an honor to serve with this fine group of devoted community leaders.

Sincerely,
Lenora Doerfler
Board President, 2014



Mark Your Calendar!
25th Annual Soup Supper
Tuesday, February 24, 2015
Georgetown Community Center

PLEASE JOIN US



FOR A
LUNCH 'N LEARN

The Caring Place Board of Directors and staff cordially invite you to join us for lunch and a “behind-the-scenes” glimpse into the inner workings of The Caring Place. You’ll learn how The Caring Place maximizes its resources, ensuring we remain strong and well-positioned to continue making a difference for our neighbors every year.

TELEPHONE RESERVATIONS REQUIRED

REGULAR SCHEDULE

Lunch ‘n Learn is held monthly at The Caring Place on the 4th Thursday, from 11:30 a.m. to 1:30 p.m. Special lunch events can be scheduled for groups upon request. For more information, or to make a lunch reservation, contact Rita Turner at 512-943-0702.

HOLIDAY SCHEDULE

NOVEMBER

Special tours by request
(Please contact Rita Turner 512-943-0702)

December

Thursday, December 11, 2014

We will resume our regular schedule in January 2015

Look Who's New!

The Caring Place is happy to announce three new staff members.

Pam Robers



Programs and Services Director

Pam Robers, Programs and Services Director, is responsible for the programs of the Client Services Department. "I am honored to have joined the team here at The Caring Place. It is an exceptional model for how a community comes together to assist others who need a helping hand."

Alicea Jones

Alicea Jones, Communications Coordinator, will be handling internal and external communications, marketing and public relations for The Caring Place. "I'm looking forward to sharing the wonderful story of The Caring Place and the great work we're able to do because of the support of our community."

Communications Coordinator



Kelly Downing



Human Resources Manager

Kelly Downing, Human Resources Manager, supports the staff in the human resources efforts of TCP including benefits and payroll administration, recruiting, policies and procedures, counseling and training. "Joining The Caring Place is a wonderful opportunity to do good work."

CHRISTY'S STORY



Christy Fry came to The Caring Place in need of services, from utility bill assistance to clothing for her three children. She received assistance to meet these needs, along with other services offered by The Caring Place.

Christy touched our hearts when she shared her story at our Deep in the Heart of Caring event in September, and reminded us of the difference we can make in people's lives.

As a single mother, Christy decided to better her life by going to college to become a registered nurse. She experienced hardships along the way; however, she never took her eye off of her dream. She lived day to day on loans, grants and assistance from other organizations to help her through college. At graduation, Christy did not even have the money to pay for the licensure exam. She returned to The Caring Place for help.

In May, Christy was introduced to the Success through Opportunities And Resources (SOAR) program of The Caring Place. The SOAR program assisted her while she became more self-sufficient and earned her degree. Thanks to the assistance she received, Christy passed her exam and is working full-time as a registered nurse. Christy says that the services she received at The Caring Place were true blessings.

Christy's story is similar to others we hear at The Caring Place. We continue to improve the programs we offer to meet the needs of the people we serve. The Caring Place is honored to be a part of Christy's story, and through the continued support of our community, we will be able to tell even more success stories like Christy's.

DEEP IN THE HEART OF CARING



If you were at our annual fundraising event, Deep in the Heart of Caring, you know that it was a fabulous night of food, entertainment and socializing. More than 300 people came out on September 27th, donned in their “Texas chic” duds, and enjoyed dinner, a live cattle round-up and dancing to the music of local artists, Kelly Willis and Bruce Robison.

Emceed by our supporter, Dan Gattis, the live auction was one of the evening’s highlights. Bid caller extraordinaire, Jimmy Doerfler, kept things moving with his rapid-fire calling. The event grossed more than \$95,000 to assist families in financial crisis.

We are so grateful for your generous, ongoing support of The Caring Place. You allow us to continue helping families in financial crisis in our community.

If you weren’t able to attend this year, we sure hope to see you next year!



Get along lil’ dogies!

Courtesy Chris Cudler



Katie Turner and Emily Turner

Courtesy Deborah Marquis



The Caring Place staff, Ann Lind and Pam Robers



Cameron and Chris Miller with Chrystle Swain



Sylvia Winden meets Chris and Kim Brown



Courtesy Chris Cutler

Betsy and Brad two-steppin' to the music of Bruce Robison and Kelly Willis



Guests eating fabulous barbeque from Johnny's Steaks and Bar-Be-Que in Salado



Board President Lenora Doerfler with Carlette Litterst



Courtesy Chris Cutler

Sherri Madden with grandson Herman Bruechner



Trick roper sisters Star Varner and Gay Chargualaf

A Special Thank You To Our Deep In The Heart Of Caring SPONSORS

H•E•B

**Schwertner Ranch Event Center
First Texas Bank
Bench Tree
Georgetown Health Foundation**

Cook-Walden Davis Funerals & Cremations
Josh & Ashley Schroeder
R Bank
Nyle Maxwell
Georgetown Rail Equipment
Steger and Bizzell
Don Hewlett
The Flower Box
Union State Bank
Scott and White
Independent Bank
Georgetown Railroad
Texas Crushed Stone
Williamson County Sun
Senator Charles Schwertner
Georgetown Commercial Properties
Panther Creek Transportation
Trade Winds Dental
Dos Salsas
Jacque Smith
The Burke Insurance Company

The Caring Place events are successful because of its hard-working and dedicated volunteers. We thank you all for your selfless time, expertise and support. You helped make Deep in the Heart of Caring a huge success. Awesome job!

DEEP IN THE HEART OF CARING COMMITTEE

Sherri Madden	Chrystle Swain
Lynn Morris	Tim Harris
Cindy Graham	John Alemán
Chris Miller	Hunter Madden

GINNA O'CONNOR and RITA TURNER, *Staff Support*

Heading Into The Home Stretch for 2014!

The hurry and flurry of the holidays will soon be upon us, and the need for your assistance is greater than ever.



Food Pantry

The Caring Place Food Pantry provides a seven-day emergency supply of food once a month to qualifying individuals and families. This year, the Food Pantry is experiencing a greater than usual need. The number of individuals served has increased 29%. At the end of September, 2013, The Caring Place had distributed food to 9,219 individuals. Comparatively, we distributed food to 11,903 individuals for the same time period this year.

"Since the Food Pantry relies mostly on community food drives and donations to fill its shelves, The Caring Place is fortunate to have the generous support of the community," says David Earl, Donations Director. "We are hoping that this may even increase as we move into the holidays."



Client Services

Similar to the increased need in our Food Pantry, we are seeing a greater need for other client services. During the first nine months of 2013, The Caring Place served 5,931 individuals. During the same time this year, we assisted 10,185 individuals.

Some of our services include: assistance with food; clothing; basic household items; emergency transportation; rent and utility bill assistance; certain medical costs and prescriptions; referrals and educational programs; and minor home repairs to accommodate disabilities.



Coats For Kids and Holiday Assistance at The Caring Place

Happy Holidays! It's that time of the year again. The Caring Place is preparing for its annual Holiday Meal Assistance and Coats for Kids programs. This year, The Caring Place anticipates an even greater need for these programs. Please consider helping us while we gear up this holiday season.

Coats for Kids allows children and their families to choose a new coat that matches their own personal style and size. Qualifying families with children under the age of 18 receive a \$20 gift card to Walmart for each child. Once a family has applied and met eligibility requirements, they leave with gift cards in hand, ready to buy a new coat for the winter season.

The Holiday Meal Program allows qualifying families to receive a gift card to HEB so they can purchase a holiday meal that reflects their culture and traditions.

Last year, we assisted 512 families with 1,416 gift cards to purchase new coats for their children. Along with coats, we provided \$24,590 in holiday meal assistance, serving 674 families and 2,541 individuals. Through these programs, \$52,910 in holiday assistance was provided to families in need in 2013.

In addition to the gift cards, The Caring Place volunteers and the Northern Williamson County community provided hand-knit hats, hand-crafted toys and books to make the holiday season extra special for the children we serve. Without the help of the community, these programs would not be possible.

Holiday Assistance programs are open to anyone who meets the eligibility requirements, and resides in Georgetown and Northern Williamson County.

Holiday Assistance programs for 2014 will run from November 3 – November 26 (Monday through Friday), 10 a.m. to 3 p.m., in The Caring Place Annex.

Note: There will be no distributions on November 13.



You Can Help!

It is never too late to donate! Please consider hosting a community food drive or donating food directly to us. A current list of needed items is available on our website at www.caringplacetx.org. To schedule a food drive or for more information, please contact David Earl at dearl@caringplacetx.org or 512-943-0710.

You can also help by:

- Sharing this information with someone in need
- Volunteering to help with the program
- Making a financial contribution

Financial donations are always welcome, and can be made online at www.caringplacetx.org or by mail to The Caring Place, P.O. Box 1215, Georgetown, TX 78627.

Please contact The Caring Place for more information at 512-943-0700.



Photo by Rudy Ximenez



Photo by Rudy Ximenez

Hunger Free Holidays

The growing number of Georgetown and Northern Williamson County area families in crisis seeking assistance from The Caring Place continues to stretch the organization's resources, especially during the holidays.

The Caring Place needs your food donations!

Help us reach our goal of receiving 1,000 pounds of donated food a day for 92 days from October 1st - December 31st.

This past summer, The Caring Place saw unprecedented need for food that we expect to continue through the holidays.

Here's how you can help feed families over the holidays:

- Determine when and where your food drive will be held.
- The Caring Place will help you promote your food drive. We will track, publicize and recognize your work and totals.
- If you currently support the Food Pantry, please continue to do so! It will count toward your totals.
- We can provide barrels or you can furnish your own receptacles.
- Check for updates on our website at www.caringplacetx.org to see what pantry items are needed.
- Call to schedule a tour of The Caring Place so you can see how your efforts make a difference!



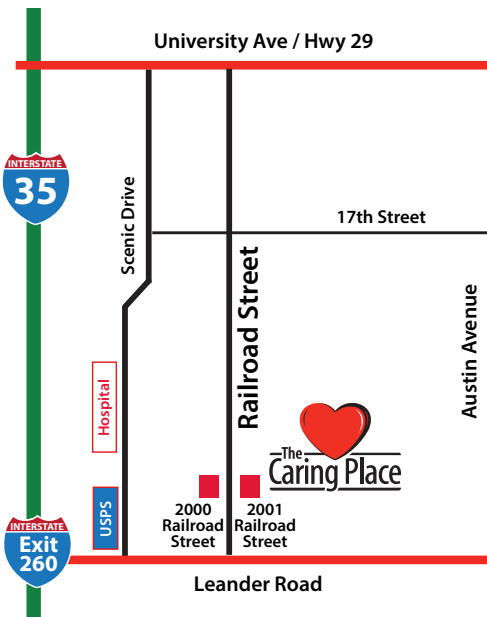
Photo by Rudy Ximenez

"What makes The Caring Place such a rewarding place to volunteer is having an opportunity to serve our wonderful clients," says Sherri Madden, Client Services Volunteer and Board Member.



Photo by Rudy Ximenez

For further information, or to organize a food drive at your business or organization, please contact David Earl, Donations Director, at 512-943-0710 or dearl@caringplacetx.org



Our courtesy truck will pick up your larger item donations to be sold in *The Shops at The Caring Place*. To schedule a pick-up, please call our donation line at 512-943-0711 and leave a message for our Donations Coordinator. Your call will be returned within 24 hours. **Please allow at least one week of advance notice when you call to schedule your pick-up.**

Vision Statement

The Caring Place is a local, faith-based non-profit organization that addresses the basic human needs of people within its service area, and collaborates with community partners to improve the quality of life of every client.

Mission Statement

Honoring its faith-based roots, The Caring Place serves its clients and communities by:

- ♥ *Responding to the basic human needs of people in Georgetown and Northern Williamson County*
- ♥ *Providing access to resources that help clients to improve their quality of life*
- ♥ *Ensuring fiscal integrity to sustain the necessary programs and services to meet identified needs on a continuing basis*
- ♥ *Engaging and empowering clients, volunteers, donors and staff to create a welcoming environment and a place with purpose.*



WE ARE HONORED TO HAVE BEEN VOTED

Best Place to Volunteer / Give Organization
for the Best of Georgetown 2011, 2012 and 2013



2000 Railroad Street • P.O. Box 1215 • Georgetown, Texas 78627 • 512-943-0700 • Fax 512-943-0740 • www.caringplacetx.org

Caring Place Hours

Client Services Offices
Monday – Friday, 9:00 a.m. to 4:00 p.m.
Open Thursdays until 7:00 p.m.

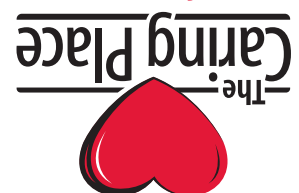
Donation Drop-Off Area
Monday – Saturday, 9:00 a.m. to 4:00 p.m.

The Shops at The Caring Place
Monday – Saturday, 9:00 a.m. to 4:00 p.m.
Open Thursdays until 7:00 p.m.

512.943.0700
www.caringplacetx.org



Doing great things together!
more



NONPROFIT
ORGANIZATION
US POSTAGE PAID
GEORGETOWN, TX
PERMIT 264